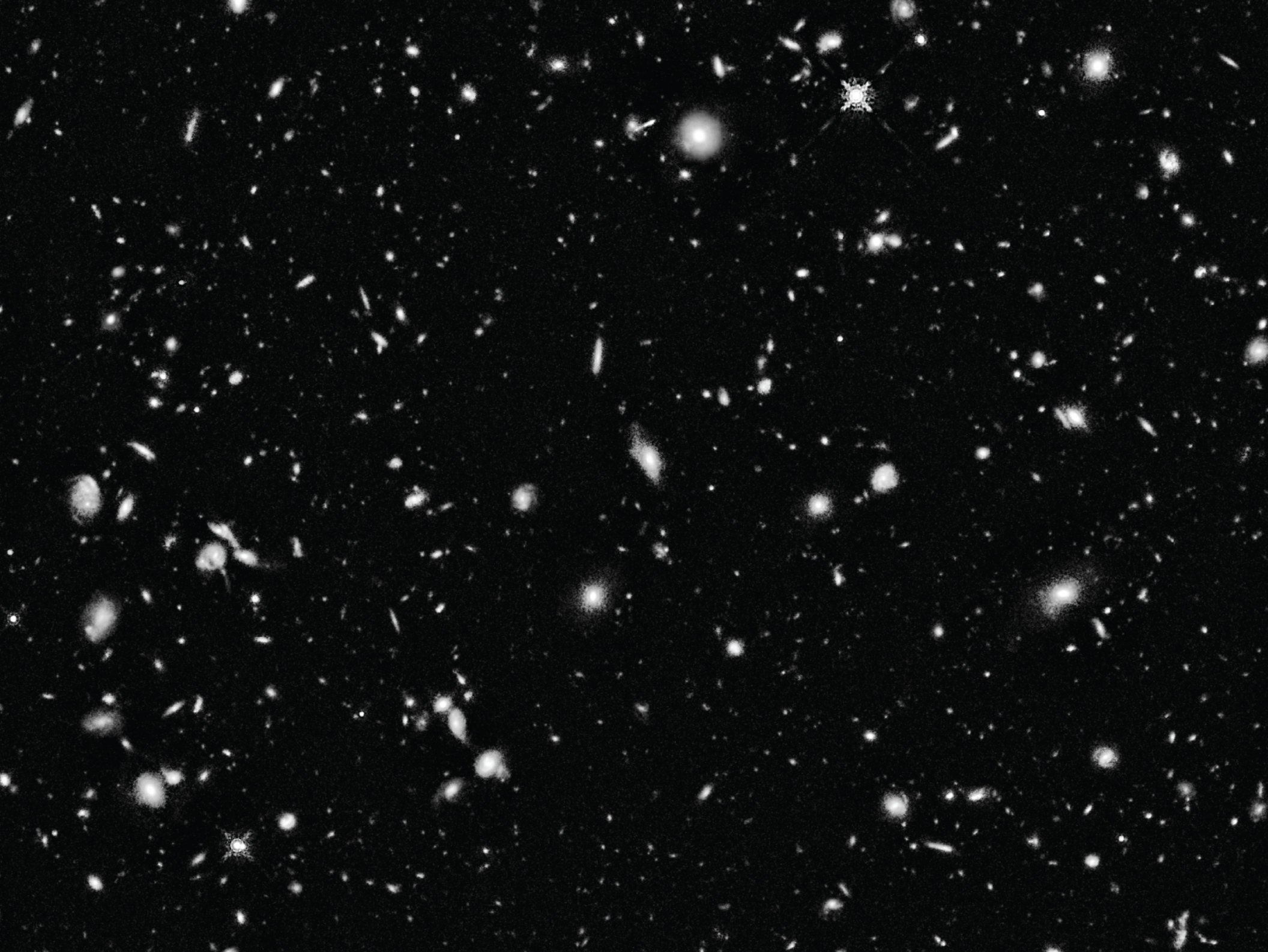




PARENTAL
ADVISORY
EXPLICIT CONTENT





CLIPPING. SPLENDOR & MISERY



Face A

1. *Long Way Away (intro)*
2. *The Breach*
3. *All Black*
4. *Interlude 01 (freestyle)*
5. *Wake Up*
6. *Long Way Away*
7. *Interlude 02 (numbers)*
8. *True Believer*

Face B

1. *Long Way Away
(instrumental)*
2. *Air 'Em Out*
3. *Interlude 03 (freestyle)*
4. *Break the Glass*
5. *Story 5*
6. *Baby Don't Sleep*
7. *A Better Place*

All music and lyrics by Clipping (Clipping Audio, BMI).

Additional musicians: Paul Outlaw (voice on tracks A1 and A8), Graham Stephenson (trumpet on track A3), Alvin Chea (voice on tracks A6, A8, and B5), Dorian Holley (voice on tracks A6, A8, and B5), Claude McKnight (voice on tracks A6, A8, and B5), David Thomas (voice on tracks A6, A8, and B5), John W. Snyder (piano on track B1 and additional vocal arrangement on tracks A6, A8, and B5), Kevin Lee (theremin on track B1), Cyrus Rex (additional synthesizers on track B3).

"True Believer" contains an interpolation of "I Know When I'm Going Home" published in *Slave Songs of the United States* (New York, NY: A. Simpson & Co., 1867).

Recorded by Clipping and Steve Kaplan. Mixed by Steve Kaplan. Mastered by Reuben Cohen at Lurssen Mastering.

Art direction and design by Clipping. Cover illustration by Jay Shaw.

Clipping are Daveed Diggs, William Hutson, and Jonathan Snipes.

